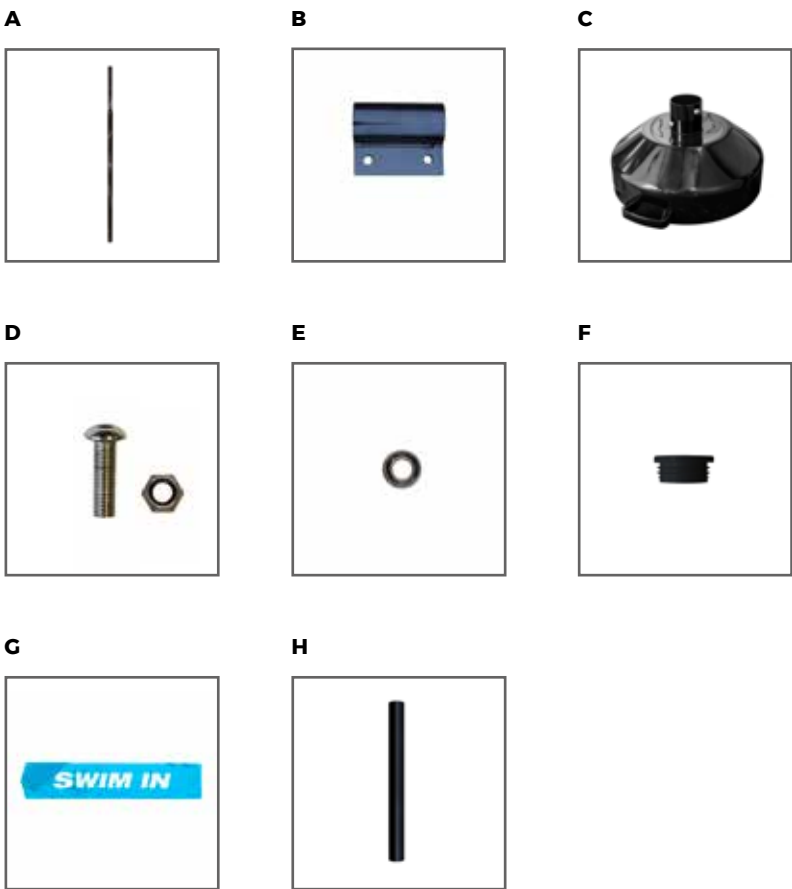
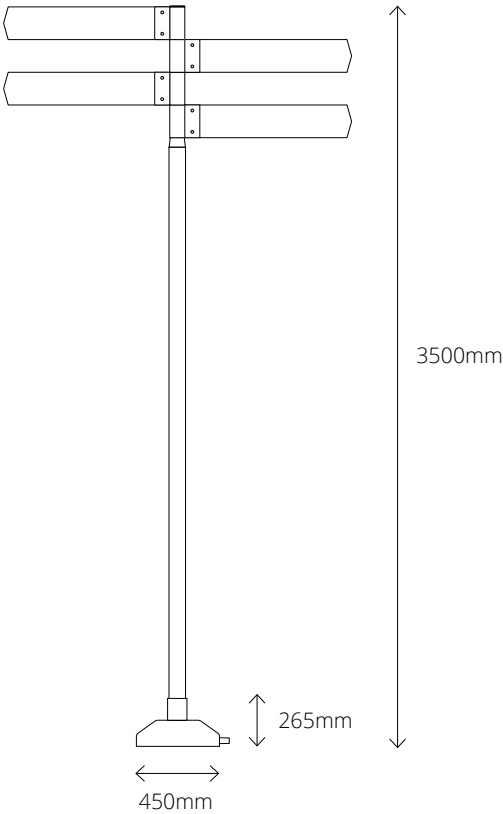


Parts

- A. 1 x Pole Section (76mm Base - 60mm)
- B. 4 x Brackets
- C. 1 x Concrete Base
- D. 8 x Bolts / 8 x Nuts
- E. 32 x Washers
- F. 1 x End Cap (60mm)
- G. 4 x Foamex Pointer Boards
- H. 1 x Spacing Tube



Technical Data - Directional Pole



Time Required
< 15 mins

People Required
1 person

Tools Required
Hex Key



Assembly

Slide the pointer board into the bracket ensuring both holes line up. Place a washer over the bolt and push through the first hole in the bracket. Turn the board over, place a second washer over the bolt and secure in place with a nut. Repeat the process for the second hole and as many pointer boards as required.

1



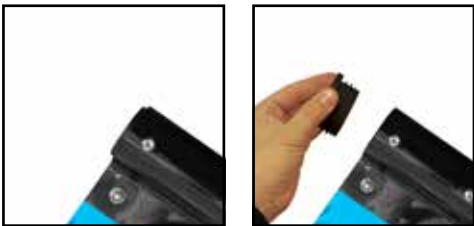
Slide the spacer tube over the top of the pole followed by the assembled pointer board. Semi-tighten both bolts (when the pole is in an upright position the boards should be pointed in the desired direction and secured fully)

2



When the pointer boards have been added to the pole place the end cap over the top of the pole.

3



Place the pole into the centre of the concrete base and tighten the bolts on the base collar to secure the pole in place.

4

