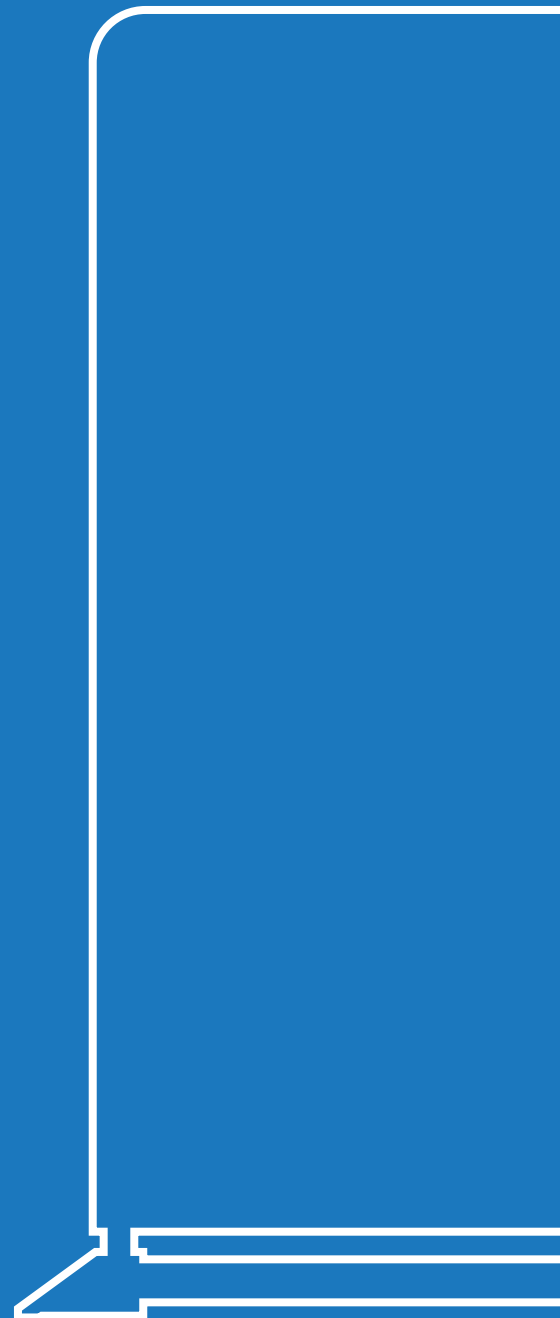
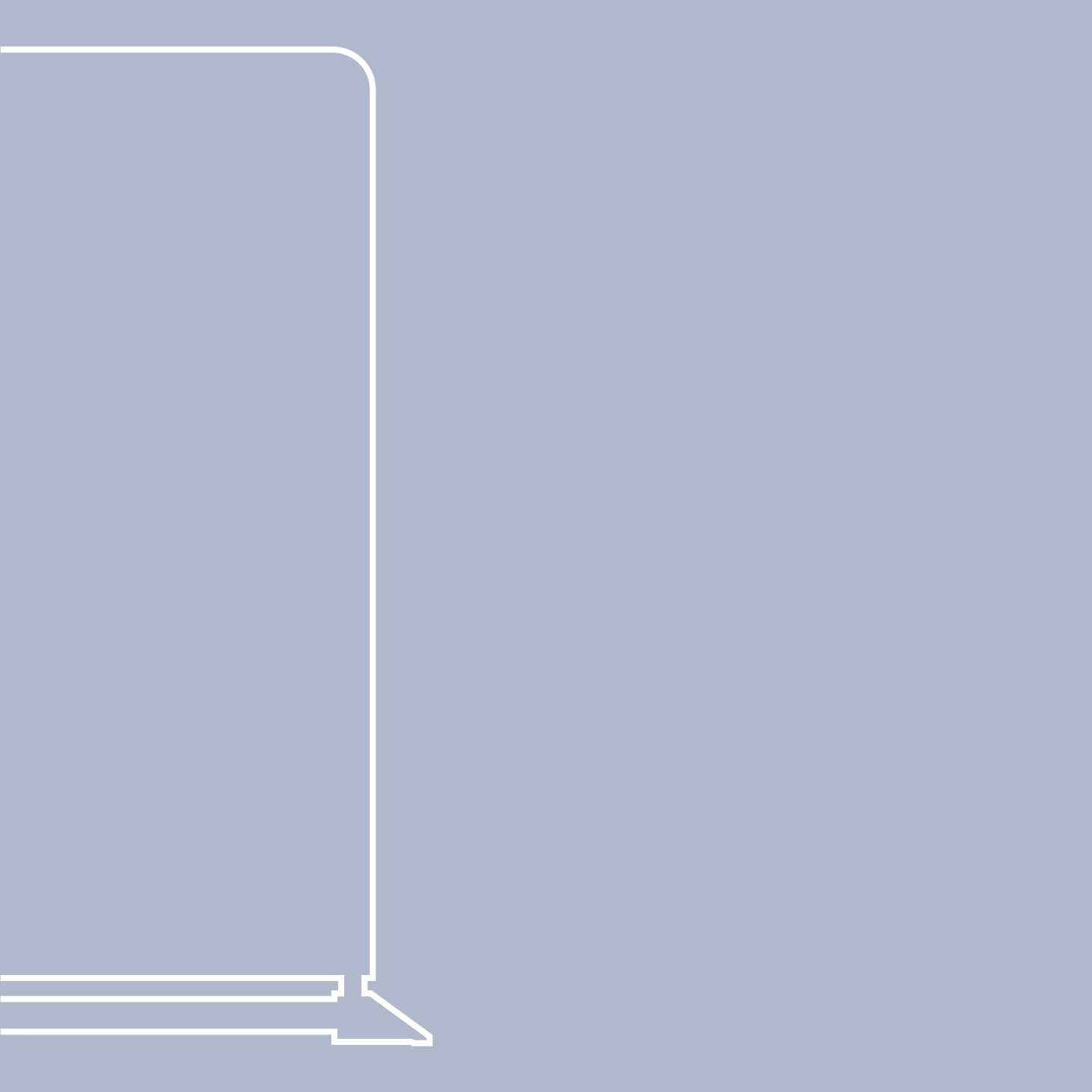


**HARRISON**  
EDS

---

**BRAVURA**  
THE PORTABLE  
DISPLAY RANGE





# CONTENTS.

WHO WE ARE

4

FABRIC DISPLAY STAND

6

PEDESTAL FABRIC DISPLAY STAND

8

ULTRA LARGE FABRIC WALL

10

PARTITION DISPLAY

12

MODULAR FABRIC DISPLAY WALL

14

TENSION FABRIC SYSTEM - WALL

16

TENSION FABRIC SYSTEM - FLOOR

18

PORTABLE COUNTER

20

MODULAR EXHIBITION STANDS

22

EXHIBITION ACCESSORIES

24

# WHO WE ARE

With over **40 years industry experience**, Harrison EDS are the preferred supplier of high quality portable displays and exhibition stands. Our striking range of display systems are hugely popular at events, trade shows and exhibitions and have been designed to help your customers stand out from the crowd and generate a return on their investment.

Our focus is on **quality and customer service**, ensuring that our product range is of the highest standard. Our in-house design team and printing experts can work with you to deliver eye-catching designs that complement your customers brand.

From seminars and exhibitions to retail environments and outdoor events, our **range of portable fabric display systems** will deliver maximum impact with minimum hassle. All of our products are easy to install, with no compromise on appearance or durability. Whether it's a cost effective display solution for a showroom or forecourt, or a high impact modular exhibition stand that needs to grab attention against competitors, we have a range of attractive options for your customers.



# OUR SERVICES



## **Creative Services**

Whether it's artwork, graphic design or 3D mock ups, our in-house team will help you deliver the perfect branding. Our in-house design and fabrication allow us to deliver custom solutions to fulfil your bespoke requests.



## **Stock Facilities**

We can hold stock for you, so you can place orders whenever is required. Need to call off an order? That's simple too. Our team of experts are always on hand to make sure you get the products you need, when you need them.



## **Ordering Portal**

Take a look at our brand new website [www.harrisoneds.co.uk](http://www.harrisoneds.co.uk). With an easy to use ordering portal that's tailored to your business, you can order quickly and efficiently using your unique log in and ensure demand is met. With access to your account details, order history and preferred products, as well as our wide range of portable display solutions, ordering from us has never been easier.



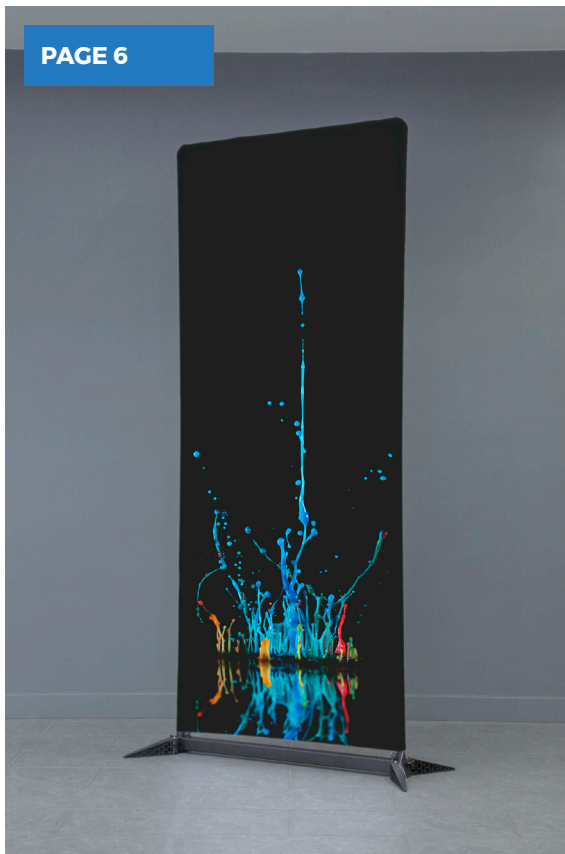
## **Delivery & Installation**

We deliver and install nationally, as well as carrying out site surveys, if required, to ensure the perfect installation. Need your order quickly? Ask us about express delivery options.



## **Customer Services & Aftercare**

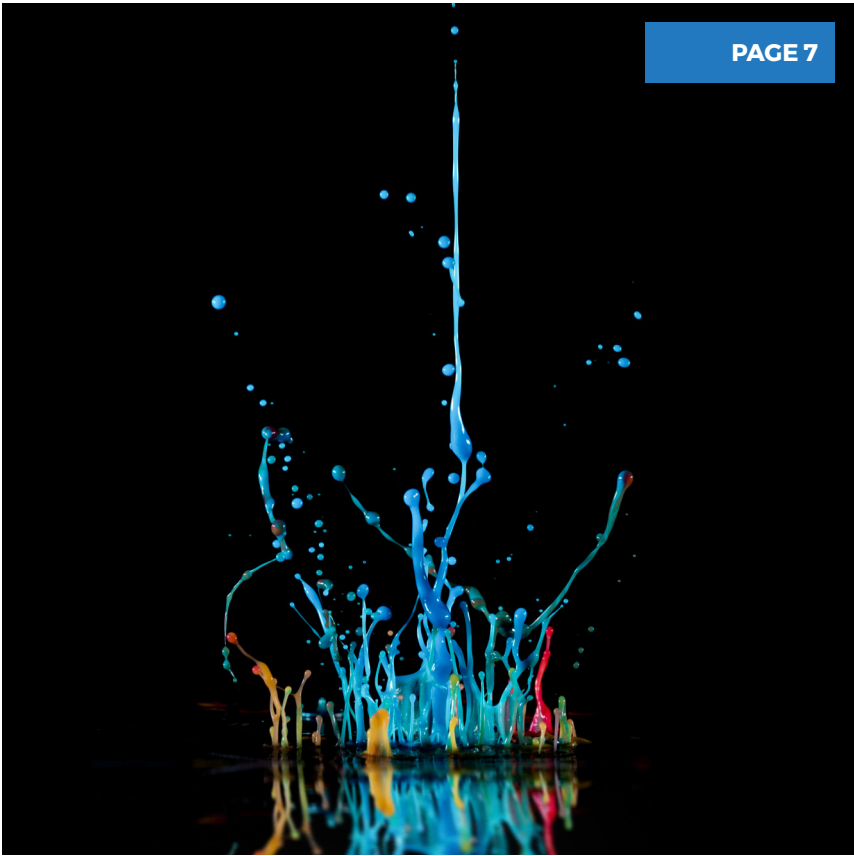
We care about our customers, if you have any questions about an order, queries about a product or anything else, we're just a phone call away.



## FABRIC DISPLAY STAND

Our Fabric Display Stands are the perfect product for any **retail environment, car showroom, event or trade show** as they are lightweight, easy to transport, and display a brand message eloquently and vibrantly on high quality printed fabric with none of the curl, scuff or glare that you would expect from a standard roll up banner.

The Fabric Display Stand is quick and easy to assemble and offers a **better alternative to the roll up banner**, helping businesses make an impact and stand out from the crowd. Unlike a roll up banner the print is double sided and can be easily replaced on the sturdy re-usable hardware, offering a longer service life, more options for your brand and a longer-term cost saving. Available in 3 sizes.



- **Reusable hardware** and replaceable fabric banners.
- Quick and easy to assemble.
- Comes in handy carry bag for easy transportation and storage.

Size (mm)	Material
850 (w) x 2100 (h) x 300 (d)	220gsm Display Polyester
2400 (w) x 2300 (h) x 300 (d)	220gsm Display Polyester
2900 (w) x 2300 (h) x 300 (d)	220gsm Display Polyester

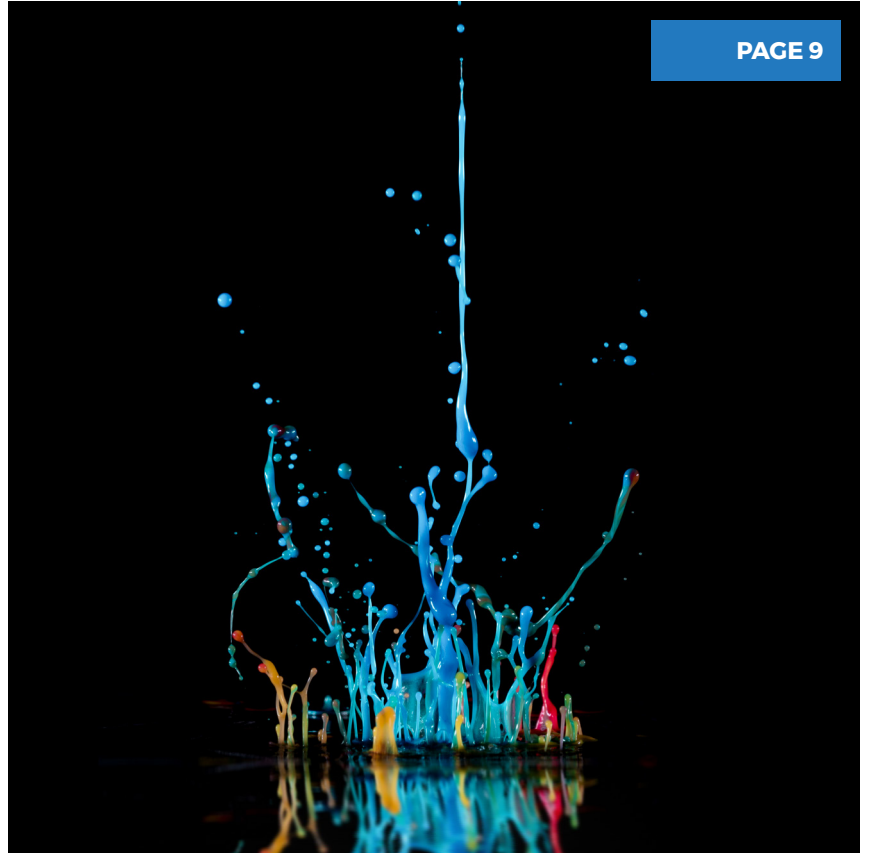
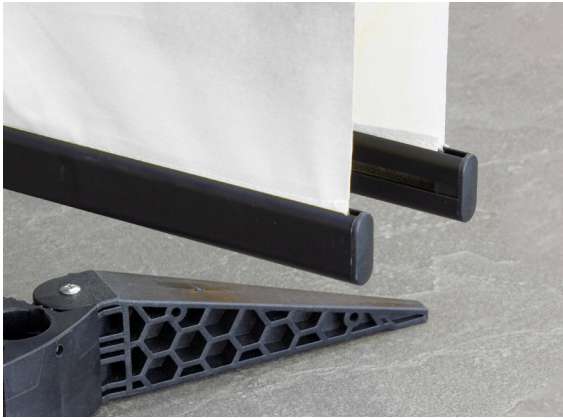


## PEDESTAL FABRIC DISPLAY STAND

This striking new fabric stand displays your graphic on a pedestal and is the perfect product for an **exhibition, theatre, museum or retail environment** where high volumes of foot traffic are guaranteed to see it.

The fabric graphic is tensioned on either side of the upright, giving you maximum visual impact from both sides. Unlike a roll up banner, there's no need to push this stand into a corner to hide a blank back. It's also very user-friendly; the hardware is re-usable and the fabric prints can be easily removed and replaced with minimum effort. If you want to change the message, you change one or both sides of the fabric panels. A significant long term saving on the roll up banner.





- **Double sided** fabric display.
- Each banner can be easily removed / replaced to quickly change your display.
- Lightweight frame with foldaway feet.

**Size (mm)**

850 (w) x 2100 (h) x 300 (d)

**Material**

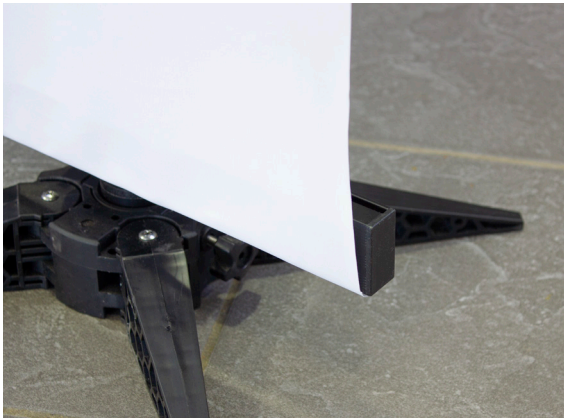
220gsm Display Polyester



## ULTRA LARGE FABRIC WALL

Our Ultra Large Fabric Wall is the perfect scene setter for a product or vehicle launch, as a **backdrop wall at a festival or an interview or sponsor wall at a major indoor event**. This lightweight Ultra Large Fabric Wall is a well-designed and easily installed display product with a single sided fabric printed graphic. Surprisingly lightweight, the frame can be dismantled into a much smaller and manageable series of components that are easily transportable. After installation, the fabric stays straight and crease-free giving a premium appearance for displaying your brand messaging.

At 6m overall length, this wall offers exceptional value and maximum impact, if 6m is too wide, you can alter your product to a 2m or 4m width by simply removing the frame components and fitting a new graphic. The printed fabric fascia is easily replaced and the hardware is reusable, offering a long-term cost-effective solution. Replacement prints available separately.



- **Instant impact**, 6 metre width.
- Quick and easy to install.
- Robust, matte black powder coated aluminium frame.

Size (mm)	Material
6000 (w) x 2300 (h) x 300 (d)	220gsm Display Polyester





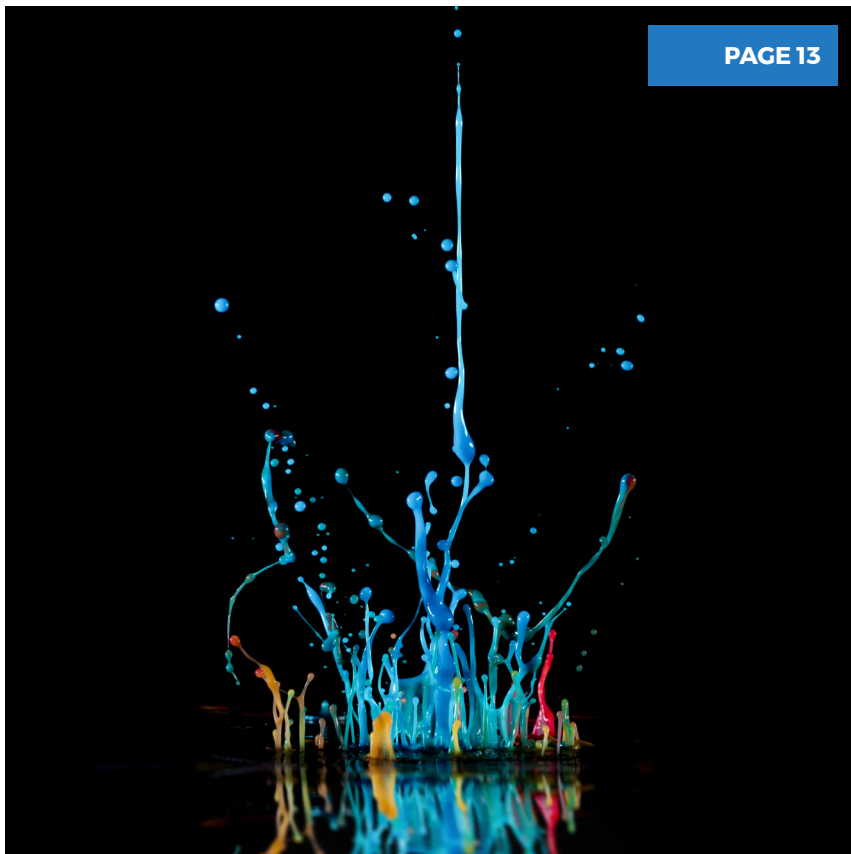
## PARTITION DISPLAY

Our Partition Displays are perfect for indoor or outdoor use, whether it's in a **car showroom or identifying separate zones** in a large open plan space in an attractive way. With full colour double sided print on tensioned fabric, its guaranteed to make an impact and increase exposure for your brand.

The black frame of the partition display features rounded corners for a sleek design with cut-out corners on the fabric to ensure the design remains taut and crease free when in use. The product comes with drilled holes in the feet should this product need securing on grassy areas or in outdoor venues. The printed fabric can be easily replaced and the hardware can be re-used time and time again, offering a versatile, cost-effective product that will never feel outdated.

Why not use our partitioning display as an alternative to a cafe barrier?





- Excellent **alternative to a café barrier** and for zoning areas.
- Available with ground pegs and base weights for outdoor use.
- Lightweight, easy to assemble frame that's easy to transport and store.

#### Size (mm)

2000 (w) x 900 (h) x 300 (d)

#### Material

220gsm Display Polyester



## MODULAR FABRIC DISPLAY WALL

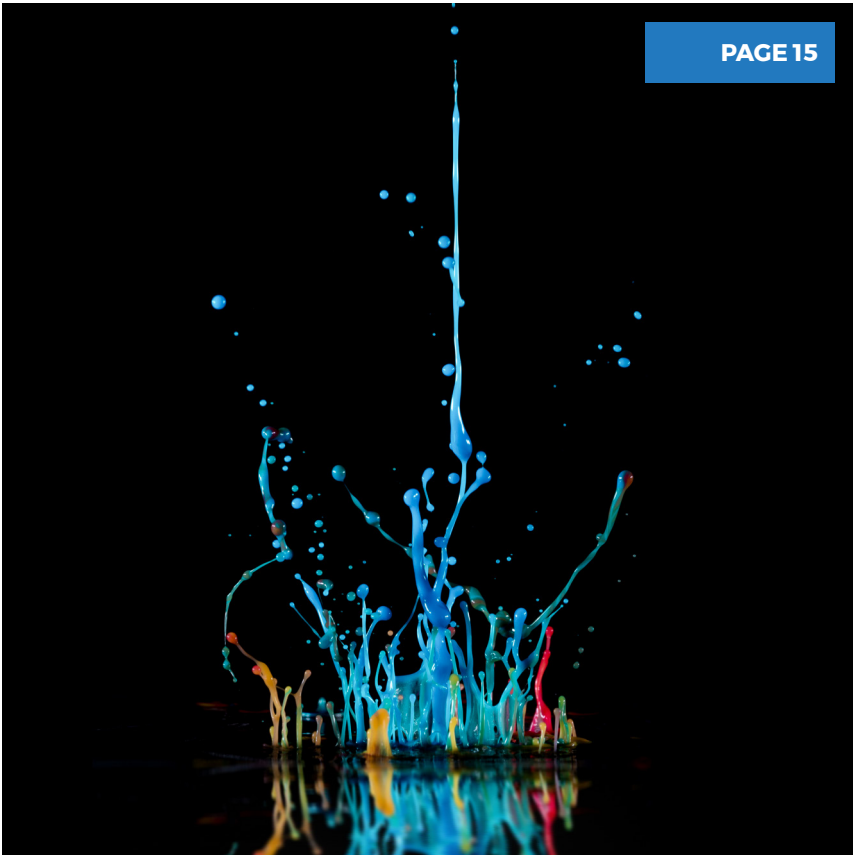


The Modular Fabric Display Wall is the next generation of display stands. An alternative to the traditional roll up banners and magnetic pop up stands, they offer an eye-catching, lightweight and portable solution.

Our Modular Fabric Display Wall is available as a curved wall (also available as straight), and is perfect for **exhibitions, showrooms, offices, and promotional events**. Your marketing messaging is printed one sided onto a thick high quality fabric which is simply zipped over the robust aluminium frame, making assembly quick and simple and maintaining taut, crease-free graphics. With specially designed feet for extra stability, you can be sure your display stands out from the crowd for the duration of your event.

The fabric graphics can be washed after each use, renewing your display for a professional look every time. Replacement graphics can also be bought separately to update your display instantly, simply reuse the hardware for a long-term, cost-effective portable display solution.

Printed full colour on front side - rear side with white finish. Full colour available as option on rear side.



- Available as 3 metre, **curved** (also available as straight).
- LED lighting available for added impact.
- Carry case included for easy transportation and storage.

Size (mm)	Material
Curved: 3000 (w) x 2260 (h)	220gsm Display Polyester
Straight: 3000 (w) x 2260 (h)	220gsm Display Polyester





## TENSION FABRIC SYSTEM - WALL

Our Tension Fabric System combines high quality printed, tensioned fabric with a robust yet lightweight aluminium frame for a modular solution that's perfect for adapting to the changing needs of your business. LED backlit option is available for maximum impact for your promotional messaging.

### What is a Tension Fabric System?

Tension Fabric consists of a printed graphic with a silicon edge sewn onto the outside of the print, which is then inserted into a channel within the aluminium frame that stretches the fabric across the size of the display and keeps it in place without any creases or folds. Tension Fabric Systems are very versatile and the graphics are interchangeable, making it a perfect solution for a fast-paced, continually changing environment where different messages need to be displayed regularly. Available in standard or custom sizes to suit your needs.

\*Wall fixings not included







- **Interchangeable fabric system**, change your messages quickly and easily.
- Available as wall mounted or floor standing.
- Custom sizes available.



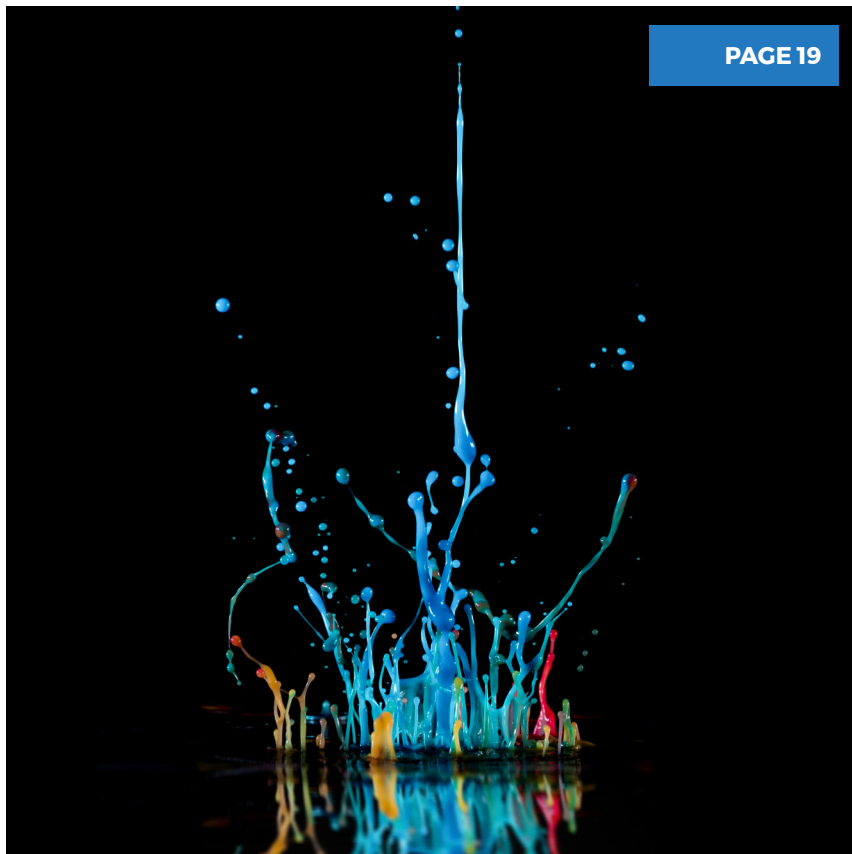
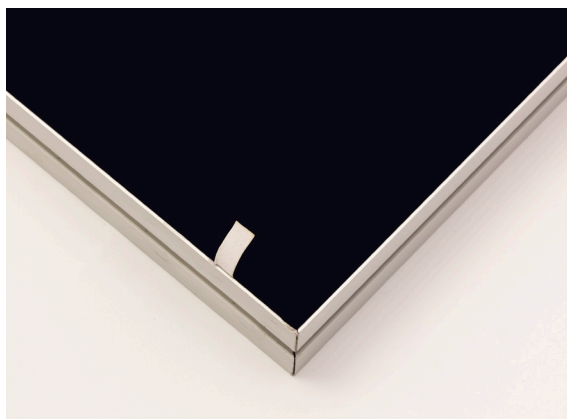
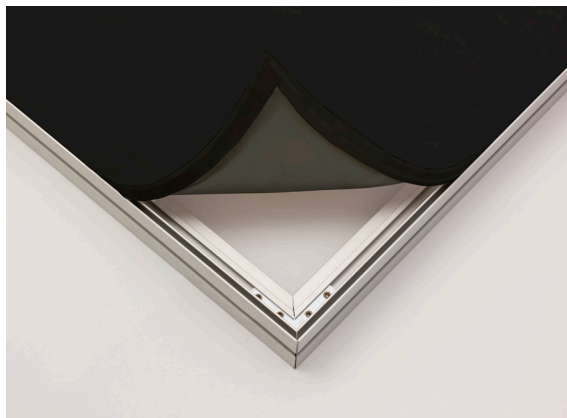


## TENSION FABRIC SYSTEM - FLOOR

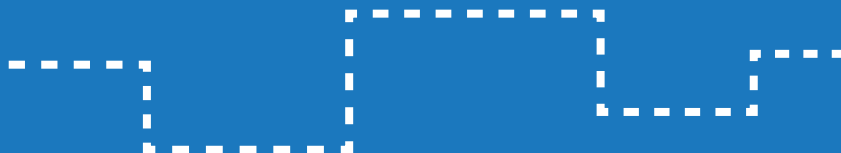
Combining a lightweight aluminium profiled frame with a stretched fabric image, our Tension Fabric System is available wall mounted or floor mounted/freestanding with the freestanding option offering **double sided print for high impact and maximum visibility for your brand**. The interchangeable tensioned fabric offers a superior quality textured print medium that's suitable for fast-paced environments such as retail areas, showrooms and forecourts. Our Tension Fabric System is available with varying levels of thickness for the frame and the frame can be powder coated to any RAL colour to ensure your product is completely tailored to your requirements.

Available in standard or custom sizes to suit your needs.





- Lightweight, **robust aluminium frame**.
- Interchangeable fabric system, change your messages quickly and easily.
- Custom sizes available.





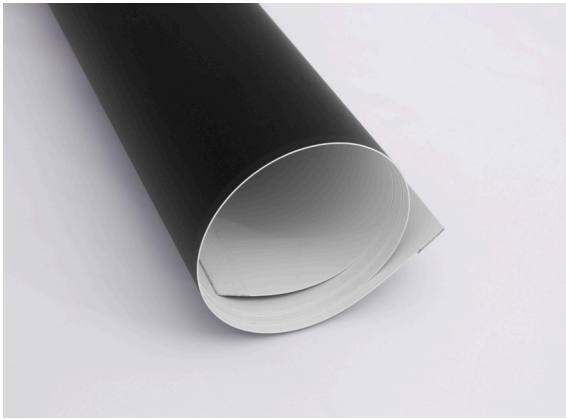
## PORTABLE COUNTER



Our portable counters, **available in an oval or round shape**, are the perfect addition for an exhibition space or event stand, offering you a branded focal point and an ideal space to display your marketing materials. Both counters come complete with a high quality hard top, a handy storage shelf and a custom printed wrap graphic that can be easily replaced for your next event or exhibition.

Both of our portable counters are lightweight and easy to transport and store. For each counter, the hardware components (counter top, base, shelf and poles) are supplied in one carry bag and the wrap around PET custom printed graphic is supplied in a separate carry bag to ensure it remains in perfect condition for your event. The printed graphic is finished with Velcro, so it can be easily attached to the counter frame and print can be easily replaced should you need to change your message.

Why not combine this with one of our fabric display stands or our exhibition shell schemes for added impact for your brand?



- Handy storage for **exhibitions and indoor events**.
- Graphics can be easily replaced for your next event.
- Complete with hard top and stable, internal shelf.

**Size (mm)**

500 (w) x 930 (h) x 500 (d)

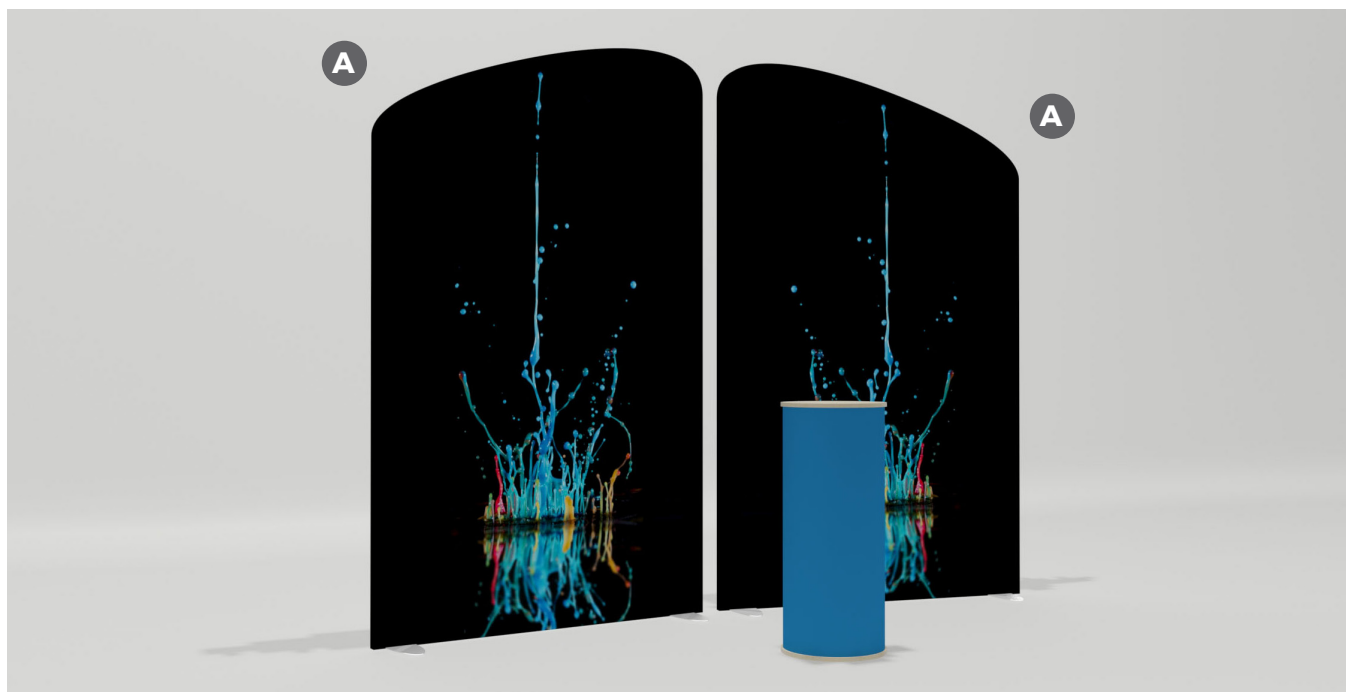
800 (w) x 930 (h) x 400 (d)

**Material**

PET Wrap, Veneer Top, Base & Shelf

PET Wrap, Veneer Top, Base & Shelf



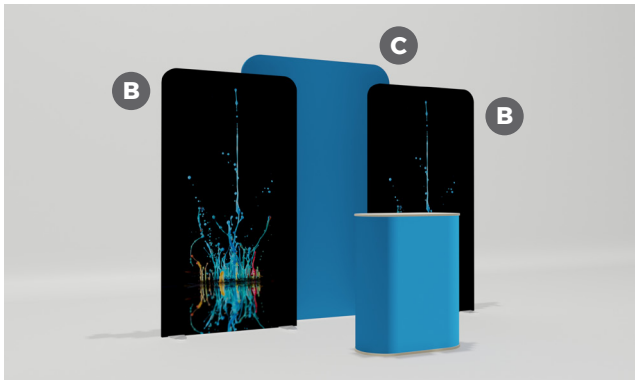


**Package 1** 3m x 2m Floor Space

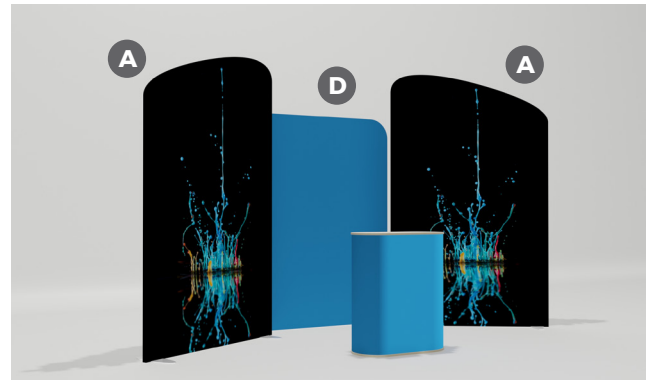
## MODULAR EXHIBITION STANDS

Our modular exhibition stands offer you a superior quality, **flexible option for your exhibition, trade show, seminar or event**. Each combination has been specifically designed to dress the standard shell scheme or floor space allocation to ensure your brand has maximum impact against your competitors. Prefer to create your own? Each component can be purchased separately so you can dress your space exactly how you want it.

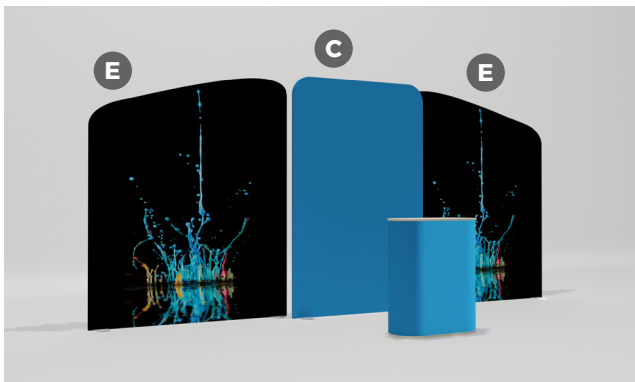
Our range of modular exhibition stands takes structures manufactured from a strong aluminium framework and adds a tensioned graphic system that fits snugly around each shape using a simple zip system to create an eye-catching display that's sure to impress your audience. Prints can be easily replaced for your next event and your hardware can be re-used, offering you a cost-effective solution for when you require a complete change of display.



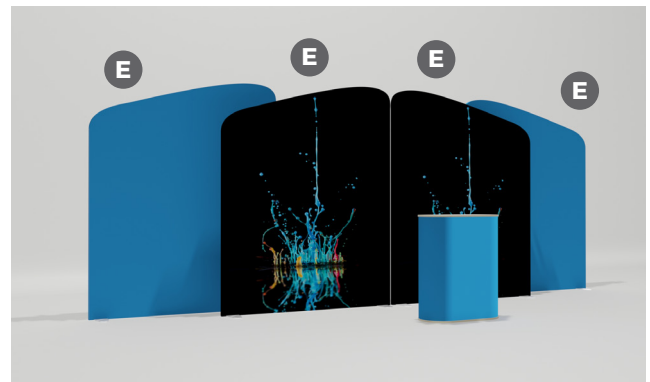
**Package 2** 3m x 3m Floor Space



**Package 3** 3m x 4m Floor Space

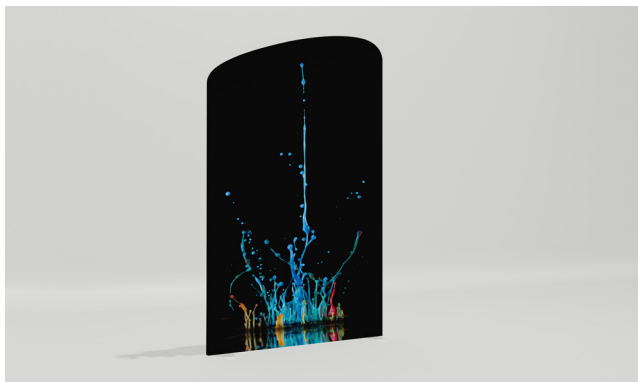


**Package 4** 3m x 5m Floor Space



**Package 5** 3m x 6m Floor Space

- Ideal for **exhibitions, seminars and events.**
- Interchangeable fabric display.
- Premium quality print and robust aluminium frame.
- Counters are available to purchase separately.



**Product A** 1500mm x 2400mm

---



**Product B** 1100mm x 2000mm

---



**Product C** 1400mm x 2200mm

---



**Product D** 1500mm x 2000mm

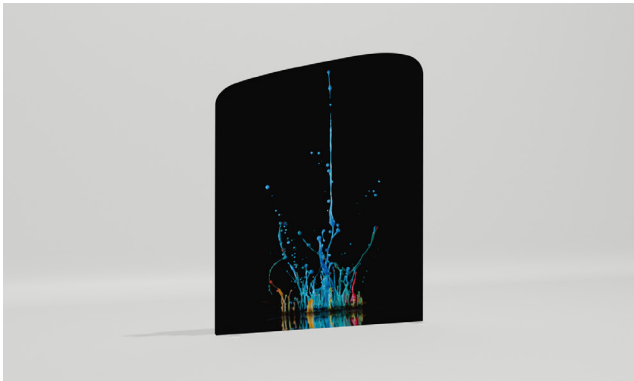
---

## EXHIBITION ACCESSORIES



Layer up your exhibition stand by adding more displays. Our wide range of displays are perfect for adding high impact graphics, they vary in size to fill any floor space, the choice is yours.

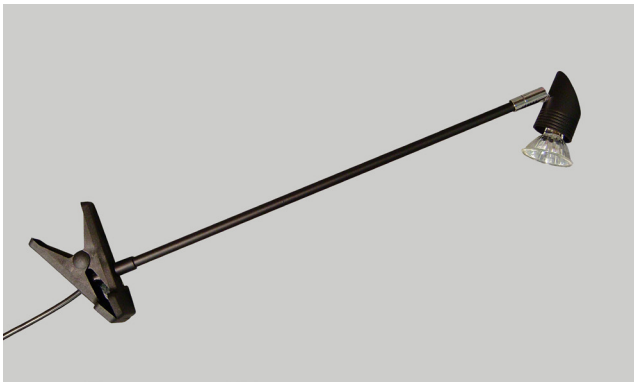




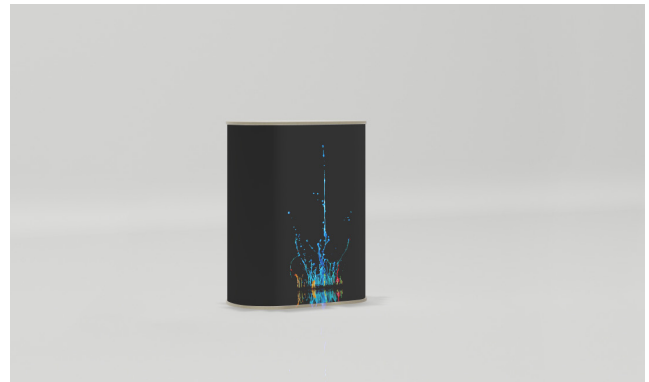
**Product E** 1800mm x 2200mm



**Round Counter** 500mm x 930mm

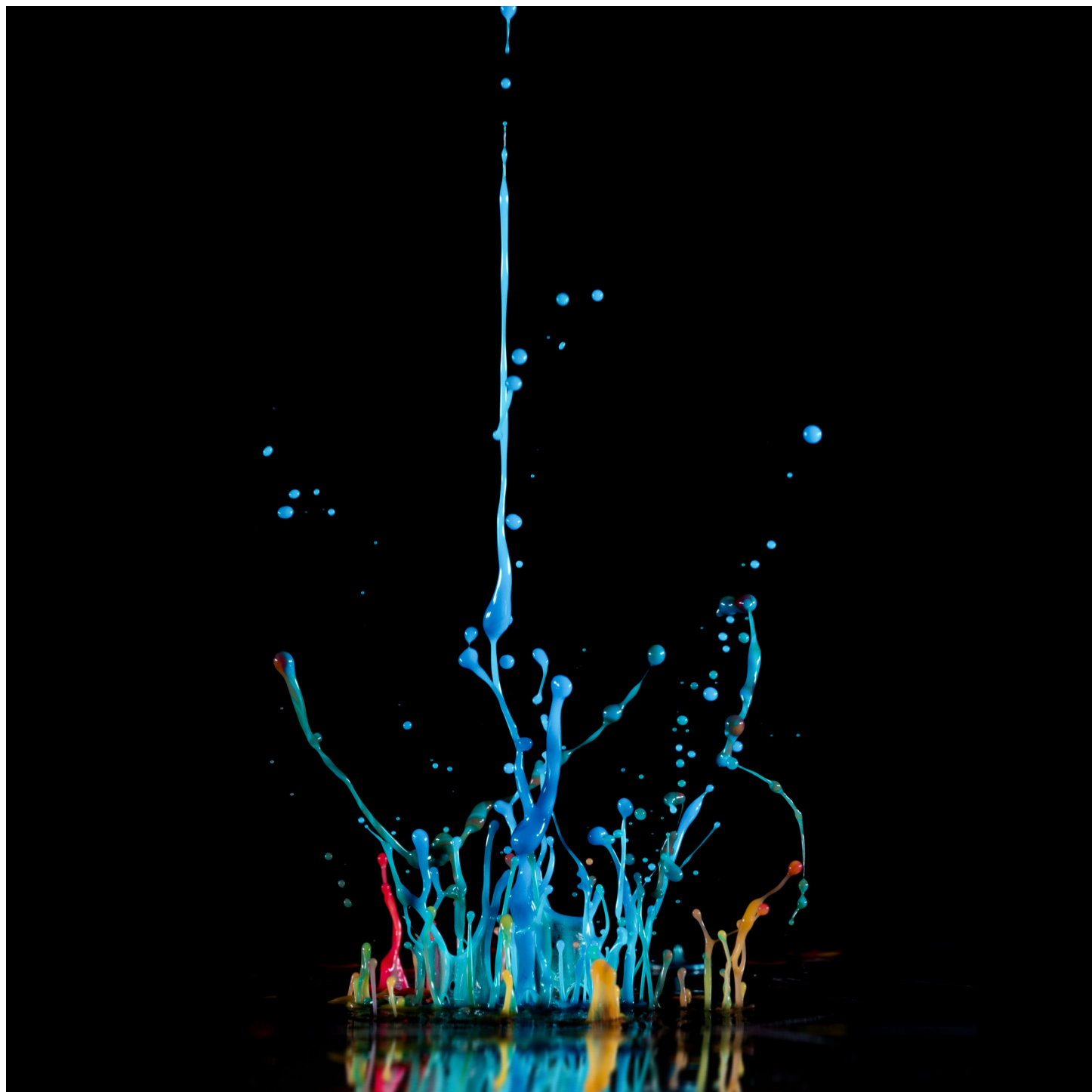


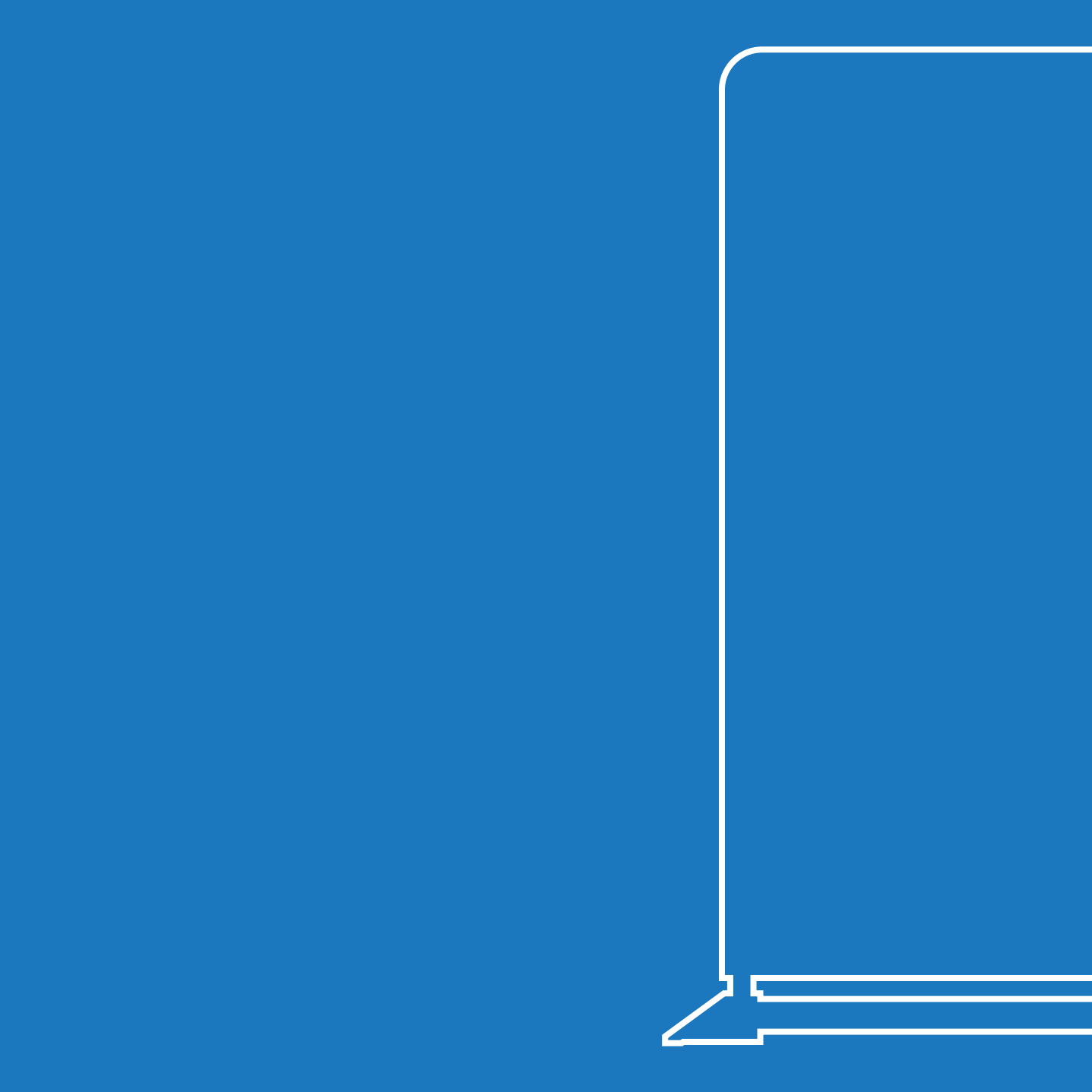
**Lighting** Available as an optional extra



**Oval Counter** 800mm x 930mm

- Components **available to buy individually.**
- Why not add a counter to your display? (See page 20).
- Illuminate your graphics by adding LED or Halogen lighting to your display, ask us about our lighting range.





**HARRISON**  
EDS

**phone:**

01325 355 433

**web:**

hello@weareharrisons.com  
www.harrisoneds.co.uk

**address:**

38 Borough Road,  
Darlington,  
County Durham, DL1 1SW  
United Kingdom

**get social:**

in